



*(Re)Imagine
Travel Technology*



GRNconnect.com
Hotel Solutions by Aman Travels Limited



WHO WE ARE



A Travel Company since **1993** with a professional team of travel industry leaders experienced in B2B sales



Have an ever growing Inventory powered by **50+** reputed suppliers



An organization with presence in **20** countries across **5** continents



People trusted by over **15000** Travel Companies around the world



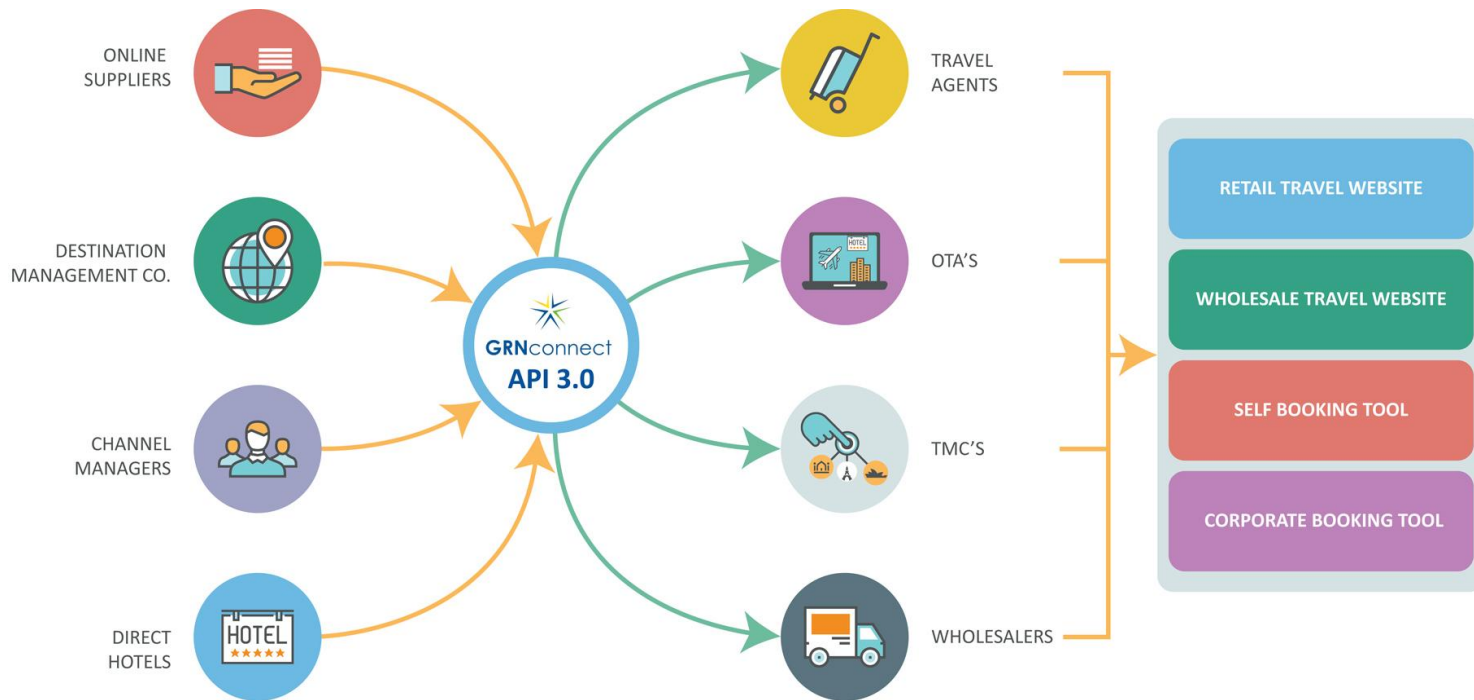
A company with **500000** hotels & many **Direct Hotel Contracts** updated daily



A **200+** person workforce across India and other countries



INTRODUCING GRNCONNECT API 3.0

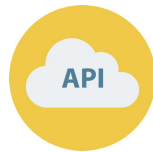




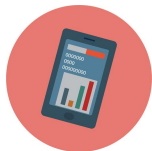
WE ARE SCALING NEW HEIGHTS



Extensible architecture
designed to accommodate
rich features.



An intuitive and consistent
Restful API aimed at
smooth adoption.



A product experience
designed for **low latency**
and good performance



An API that uses lean **JSON
formats** in lieu of verbose
XML formats



Fault tolerant and resilient
technology solution.



Built atop new generation
technologies for better
concurrency



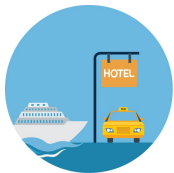
Vastly improved **Caching
Strategy** to deliver faster
results



Enhanced **data mapping** for
quality information about
properties & more



WHAT IT MEANS FOR YOU



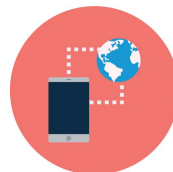
Wide range of inventory of Hotels, Sightseeing, Villas, Transfers, Apartments, Cruises and more



Great rates with Dynamic Pricing that is updated daily or even within a day as per market trends



An ever expanding integration road map with leading and emerging suppliers worldwide



Seamless connectivity that enables access across devices and form factors



A well documented API that enables you fetch faster and richer responses to queries from your site



A passionate support team ready to help you succeed with technical and business issues



WHY SHOULD YOU BE READY

The outlook for 2016 is again positive with 4.3% growth for outbound travel forecast. Once more, Asia Pacific is expected to head the worldwide growth, followed by North America, while Europe should generate solid growth and South America will consolidate its recent increases. One particularly positive finding in the World Travel Monitor® is that 55% of international travellers say that crises do not influence their travel planning.

Global online travel sales have grown over the past few years. Online sales value of air travel, hotels and OTA's are all expected to grow by at least six percent in 2015. In the same year, online travel sales cumulatively generated 533.52 billion U.S. dollars. This figure was forecasted to grow to 762 billion U.S. dollars by 2019.

In the 12 months to June 2016 there were 67.6 million visits abroad made by UK residents. This was an increase of 8% when compared with the same period a year earlier. These residents spent £40.7 billion abroad, a 12% increase than in the same 12 months to June 2015.



Office for
National Statistics



Glossary

Low latency in a software system is about services that are real time or near real time in speed. Typically, we notice low latency in services like trading platforms, online gaming, VOIP, Chat (WhatsApp) etc.

REST (REpresentational State Transfer) is a popular building style for cloud-based APIs, such as those provided by Amazon, Microsoft, and Google. When Web services use REST architecture, they are called **RESTful APIs** (Application Programming Interfaces) or REST APIs. REST is a newer generation style and is today preferred over the more heavyweight SOAP (Simple Object Access Protocol) style due to lower use of bandwidth and better performance.

JSON (JavaScript Object Notation) is the next generation to XML, often called Fat-free XML. It is an open-standard format that is the most common data format used for asynchronous browser/server communication (AJAX), largely replacing XML across the industry. It is far simpler than XML and is a far effective data exchange format

Concurrency is the ability of a platform to handle multiple tasks and process more information at the same time (concurrently). As a result, it will process multiple requests at the same time.

Fault tolerance is a property that enables a system to continue operating properly in the event of the failure of (or one or more faults within) some of its components. So, when there is a technical issue, the whole software will not be unresponsive, unlike other traditional softwares.



HOW CAN WE HELP
YOU TODAY?

GRNconnect.com

E: marketing@grnconnect.com

Contact Person

Edward J

E: info@maxtravel.co.uk

Shivali Khosla

E: shivali.khosla@grnconnect.com